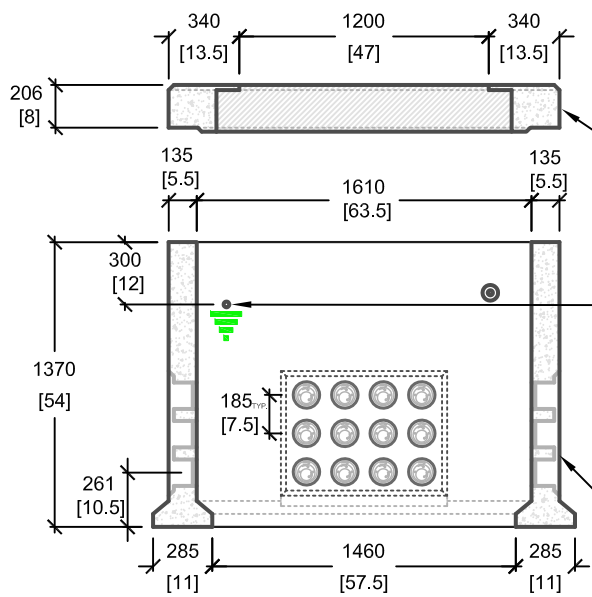
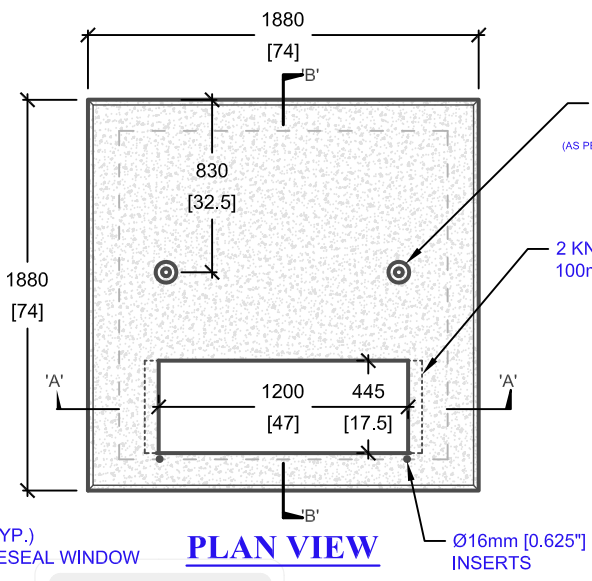


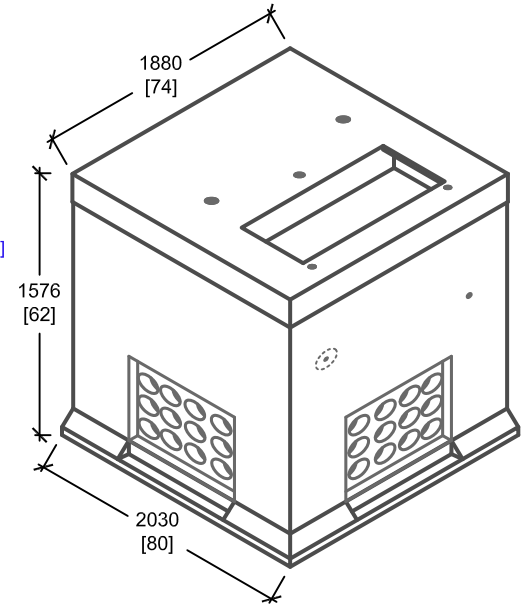
LOAD REQUIREMENTS	
DISTRIBUTED LATERAL LOAD	25 kN/m ²
TOP SLAB DISTRIBUTED LOAD	60 kN/m ²
TOP SLAB POINT LOAD	70 kN



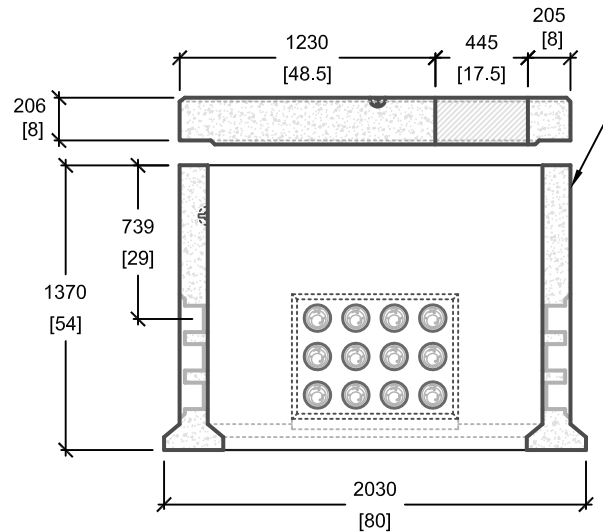
CROSS SECTION 'A'



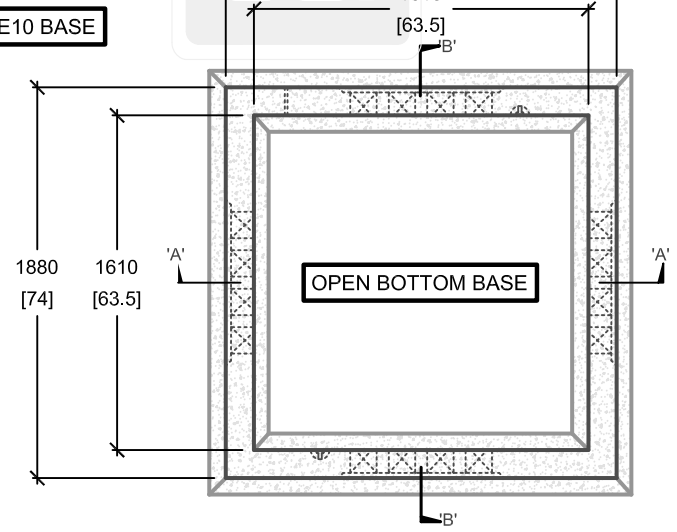
PLAN VIEW



ISOMETRIC VIEW



CROSS SECTION 'B'



PLAN VIEW

NOTES:
 • SOIL BEARING CAPACITY TO BE MIN. 130 kPa (SLS); VERIFY ON SITE.
 • TRANSFORMER ANCHORAGE FROM E-10 BASE TO E-11 PAD TO BE PROVIDED BY OTHERS.

mm
 [Inches]
 ALL DIMENSIONS DEFAULT TO MILLIMETRES



UTILITY STRUCTURES INC.
 61 BONGARD AVE | OTTAWA, ON | K2E 6V2
 T: 613.225.6398 F: 613.225.1681 TF: 800.267.6466
www.utilitystructures.com

CONSTRUCTION DETAILS:

- REFERENCE **HYDRO OTTAWA UCS0001**
- E-10 BASE AND E-11 PAD ASSEMBLED

• **CSA 23.4-05**

- 35 MPa (5000psi) AT 28 DAYS
- STRIPPING STRENGTH: MIN. 20 MPa(2900psi)
- 5-8% AIR ENTRAINED
- EXPOSURE CLASS: C-1
- REINFORCING: STEEL TO CSA CAN A23.1

PRODUCT DETAILS:

E-10 BASE

- (4) 127mm[5"] POLYLOK PIPESEAL WINDOWS (12 POLYLOKS PER WINDOW)
- THREE PHASE BASE 150kVA TO 2500kVA
- CLOSED BOTTOM KINGSTON UTILITIES VERSION AVAILABLE(DWG# E-10B)

E-11 PAD

- (2) 16mm[0.625"] INSERTS
- MULTI-PURPOSE PAD OPENING:
 - 445mm[17.5"] x 1200mm[48"]
 - 445mm[17.5"] x 1400mm[55"]
- KNOCKOUT IS NOT STRUCTURAL AND CANNOT TAKE ANY LOAD
- CUSTOM OPTIONS AVAILABLE

PRODUCT CODE:

E-10^C/E-11_W
 THREE PHASE TRANSFORMER BASE & PAD

OUTSIDE DIMENSIONS:
1.58m(H) X 1880mm x 1880mm

TOTAL WEIGHT:
4,250 kg / 9,350 lbs

REVISION DATE: MARCH 2, 2016 **REV. # 4**