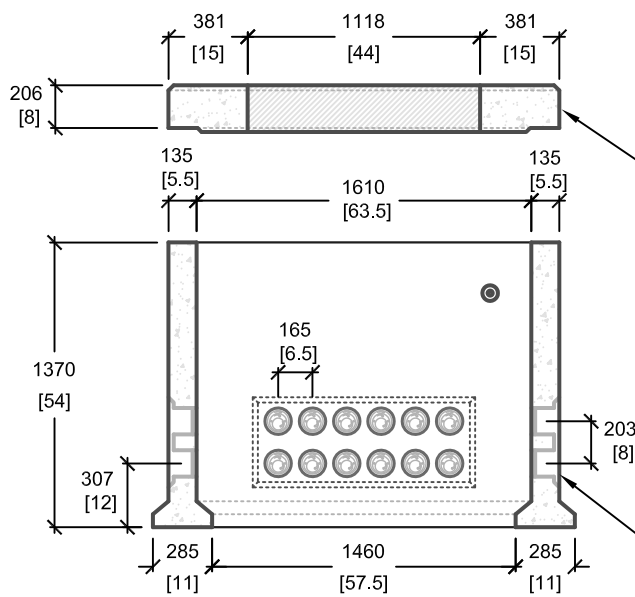
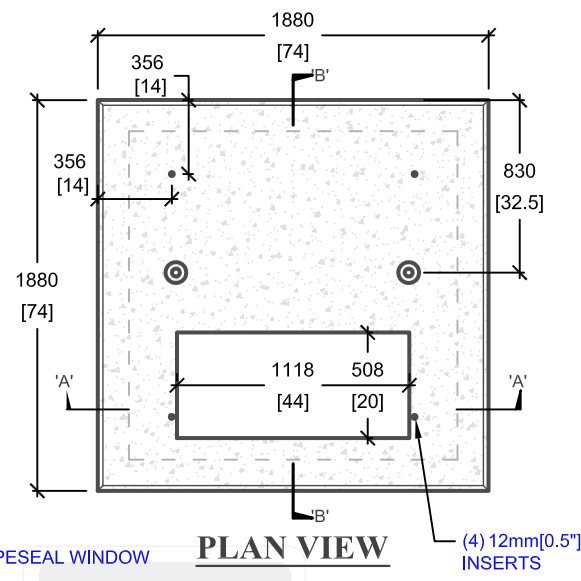


LOAD REQUIREMENTS	
DISTRIBUTED LATERAL LOAD	25 kN/m ²
TOP SLAB DISTRIBUTED LOAD	60 kN/m ²
TOP SLAB POINT LOAD	70 kN



E11-ONT PAD

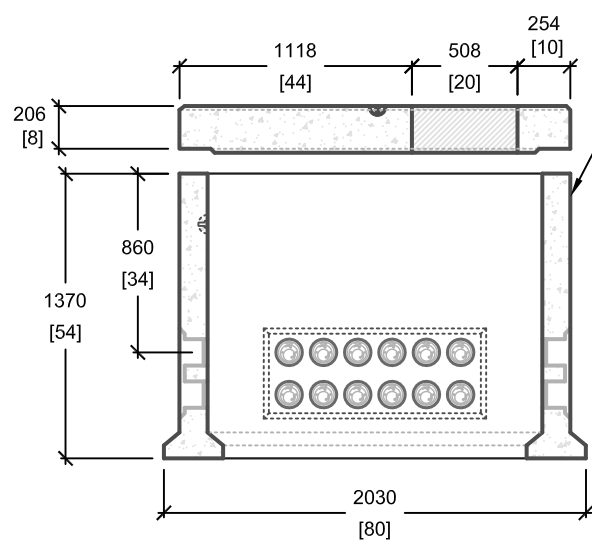


PLAN VIEW

127mm[5"] POLYLOK PIPESEAL WINDOW
12 PER SIDE

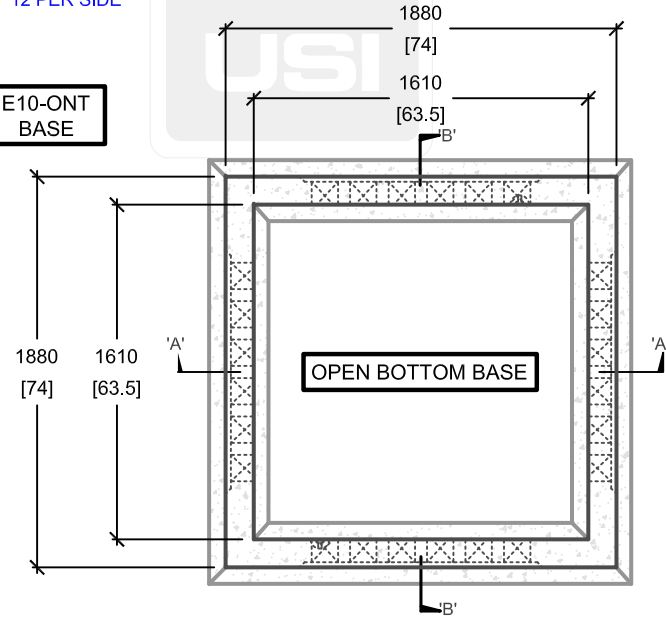
(4) 12mm[0.5"] INSERTS

CROSS SECTION 'A'

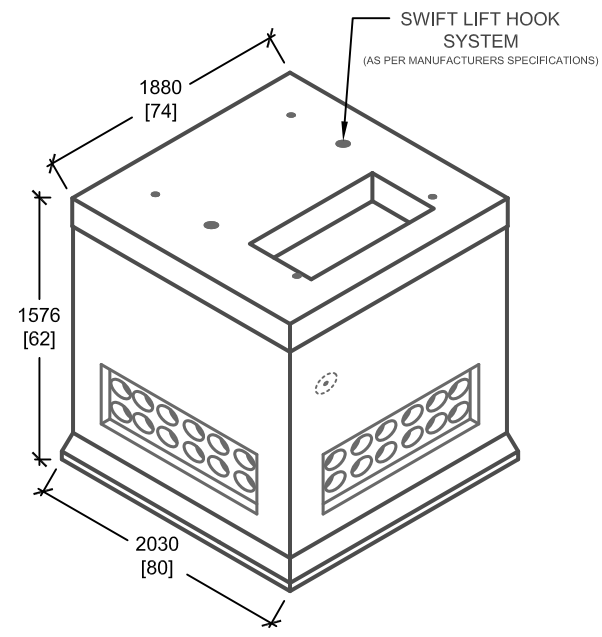


CROSS SECTION 'B'

E10-ONT BASE



PLAN VIEW



ISOMETRIC VIEW

SWIFT LIFT HOOK SYSTEM
(AS PER MANUFACTURERS SPECIFICATIONS)

mm [Inches]
ALL DIMENSIONS DEFAULT TO MILLIMETRES

NOTES:
• SOIL BEARING CAPACITY TO BE MIN. 130 kPa (SLS); VERIFY ON SITE.
• TRANSFORMER ANCHORAGE FROM E-10 BASE TO E-11 PAD TO BE PROVIDED BY OTHERS.



UTILITY STRUCTURES INC.
61 BONGARD AVE | OTTAWA, ON | K2E 6V2
T: 613.225.6398 F: 613.225.1681 TF: 800.267.6466
www.utilitystructures.com

- CONSTRUCTION DETAILS:**
- REFERENCE **HYDRO ONE DU-09-202**
 - **E-10-ONT BASE AND E-11-ONT PAD ASSEMBLED**
 - **CSA A23.1**
 - 35 MPa (5000psi) AT 28 DAYS
 - STRIPPING STRENGTH: MIN. 20 MPa(2900psi)
 - 5-8% AIR ENTRAINED
 - EXPOSURE CLASS: C-1
 - REINFORCING: STEEL TO CSA G30.18

- PRODUCT DETAILS:**
- E-10-ONT BASE**
- (4) 127mm[5"] POLYLOK PIPESEAL WINDOWS (12 POLYLOKS PER WINDOW)
 - THREE PHASE BASE 150kVA TO 2500kVA
 - E-10B-ONT CLOSED BOTTOM BASE AVAILABLE
- E-11-ONT PAD**
- (4) 12mm[0.5"] INSERTS (356mm[14"]x356mm[14"] FROM EDGES)
 - PAD OPENING: 508mm[20"]x1118mm[44"]
- CUSTOM OPTIONS AVAILABLE**
- CUSTOM KNOCKOUTS AND PAD OPENINGS

PRODUCT CODE:	
E-10^C/_W E-11-ONT	
THREE PHASE TRANSFORMER BASE & PAD	
OUTSIDE DIMENSIONS:	
1.58m(H) X 1880mm x 1880mm	
TOTAL WEIGHT:	
4,250 kg / 9,350 lbs	
REVISION DATE:	MAY 3, 2016
REV. # 1	